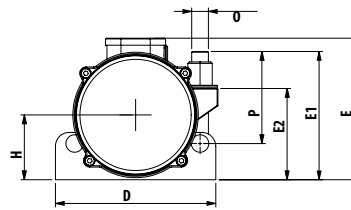
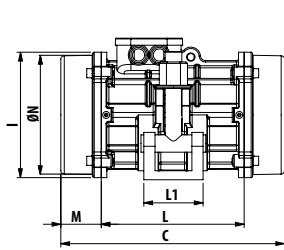




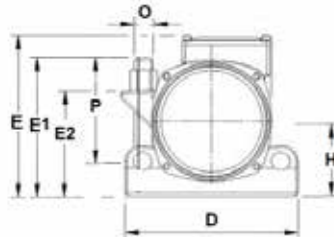
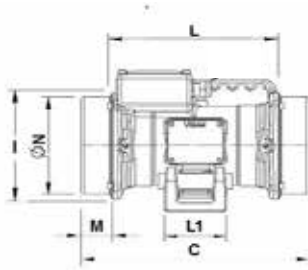
Electric Vibrating Motor for Concrete Consolidation - CRADLE

E



*Cradle not included

F



*Cradle not included

STANDARD FREQUENCY ELECTRIC MOTORS

Wm (kgcm)	Model	Weight (kg)	Centrifugal Force (kg)	rpm	ELECTRICAL SPECIFICATIONS						CERTIFICATE	
					Input Power (kW)	Frequency (Hz)	Nominal Current A max.		Power Factor	la / In	Cable Gland (Metric)	Ex II3D Temp. Class
16	SPC 50 7.0 A-00	23.5	800	3.000	0.75	50	on request	2.25/1.30	0.84	5.0	M20	on request
20	SPC 50 9.0 A-00	24.5	1.000	3.000	0.85	50	on request	2.42/1.40	0.88	5.0	M20	on request

HIGH FREQUENCY ELECTRIC MOTORS

Wm (kgcm)	Model	Weight (kg)	Centrifugal Force (kg)	rpm	ELECTRICAL SPECIFICATIONS						CERTIFICATE	
					Input Power (kW)	Frequency (Hz)	Nominal Current A max.		Power Factor	la / In	Cable Gland (Metric)	Ex II3D Temp. Class
7.40	HFC-200 6000/15	21.5	1.500	6.000	1.00	200	19.70	3.60/2.10	0.70	5.50	M20	on request
14.66	MVE 1300/6C	29.0	1.474	0÷6.000	1.30	0÷100	on request	4.24/2.44	0.77	3.10	M20	100° C
10.00	VFC 100 20/6	24.0	2.000	0÷6.000	1.25	0÷100	on request	4.00/2.30	0.79	5.50	M20	on request

Model	Drawing	Size	DIMENSIONAL SPECIFICATIONS (mm)												
			C	M	L	L1	O	P	D	E	E1	E2	I	H	N
SPC 50 7.0 A-00	F	05	390	83	224	85	M24	132	230	212	184	136	163	95	148
SPC 50 9.0 A-00	F	05	390	83	224	85	M24	132	230	212	184	136	163	95	148
HFC-200 6000/15	F	05	312	44	224	85	M24	132	230	212	184	136	163	95	148
MVE 1300/6C	E	50	321	58	205	85	M24	132	230	203	184	131	180	93	170
VFC 100 20/6	F	05	390	83	224	85	M24	132	230	212	184	136	163	95	148

ELECTRIC VIBRATING MOTOR FOR CONCRETE CONSOLIDATION - CRADLE VERSION

APPLICATION Concrete formworks in situ
Concrete moulds in precast industry



FEATURES

DUTY CYCLE	Continuous S1
MULTIVOLTAGE	3ph 42V - 3ph 230/400V [* voltage tolerance ± 10%]
FIXED FREQUENCY	50Hz and 200Hz
VARIABLE FREQUENCY	0÷100Hz
WORKING TEMPERATURE	-10°C +40°C
MAX NOISE LEVEL	85 dB(A) at 1 meter distance
MATERIAL	Aluminium or cast iron
OPTIONS	Power cable
ACCESSORIES	Fixing tool: CRS (Cradle for Steel concrete moulds)



This information is furnished without warranty, representation, inducement or license of any kind. It is accurate to the best OLI knowledge or is obtained from sources believed to be accurate. OLI therefore assumes no legal responsibility.

