

Elevator Bolts

EURO BOLT

Steel / Stainless steel 304 & 316

- DIN 15237
- Actual min core hardness 90-95 Rockwell B
- ISO grade 5.8 (exceeds DIN)
- Large bolt head diameter
- Fully threaded Zinc plated as standard or stainless



REF 70 Bolts

Steel / Stainless steel 304 & 316

- Steel - ISO grade 5.8
- Concave head with 4 lugs on the underside to prevent rotation when tightening
- Whitworth or metric



FANG BOLTS

Steel

- Pointed tip - Easy to fit "blind" through belt
- Unique Design - Fangs lock bolt in place while nut is tightened
- Large bolt head diameter
- Flat bolt head - reduces risk of rip out of bolt
- Extensively tested and used in USA grain industry
- Suitable for recessed or non recessed holes



EASIFIT Bolts

Steel / Stainless steel 316

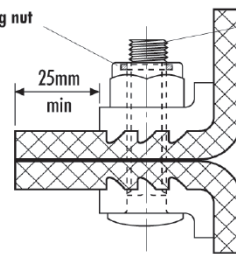
- Shank formed with hexagon tip (easy fastening with special tool)
- Speeds fitting & removal of bolts
- Improves elevator safety
- Reduces belt damage caused by standard bolts



JACKSON GRIPWELL

- For elevator belts up to 630 kN/m and up to 7.0mm max. thickness.
- Vice grip between serrated jaws.
- Use 2 fasteners of equal length per joint. e.g. 2 x 150mm Supergrip fasteners for a 300mm wide belt.

Nylon insert self-locking nut
 Ecrou frein



⁵/₁₆ Whitworth high tensile plated bolt
 (M8) zingué CLB.8 boulon